

SOCIETY HILL

Reporter

www.societyhillcivic.org

A Venerable Philadelphia Treasure



The Society Hill Civic Association (SHCA) invites the community to its next general membership meeting at Pennsylvania Hospital's Zubrow Auditorium on Wednesday, November 14 at 7:30 p.m. Neighbors will be treated to an interesting presentation about the Reading Terminal Market, as well as some of its tasty snacks!

Markets have been a part of Philadelphia history since the city's development by William Penn in the late 17th century. They started as open-air sheds, like our own Headhouse Shambles. In 1859, public concerns about health and traffic congestion forced them indoors. The two main markets that sprang up at 12th and Market Streets became the Reading Terminal Market in 1893 when the Philadelphia and Reading Railroad Company agreed to erect a new structure tucked beneath the train shed and tracks.

Reading Terminal Market General Manager Anuj Gupta and Special Projects Director Layla El Tannir will showcase how this 125-year-old Philadelphia institution is functioning in the 21st century. They will touch on its mission to ensure that everyone has access to fresh, quality food; the challenges of maintaining and growing in a historical building; and discuss how they are staying relevant in an ever-growing, competitive landscape. Finally, they will share new offerings, shopping tips and preview the market's future.

Everyone is welcome to attend. Simply arrive at Pennsylvania Hospital's Zubrow Auditorium, located on the first floor inside the main entrance at 8th Street near Spruce, before 7:30 p.m.

We cordially invite members to the SHCA Holiday Social



*Wednesday, December 5, from 6 to 7:30 p.m.
Cavanaugh's Headhouse, 421 S. 2nd Street
\$15 per person cover for SHCA members
Hors d'oeuvres included, cash bar
RSVP by Thursday, November 29*



Payment is required with your RSVP so that we can provide the restaurant with an accurate count. Your name tag will be provided when you arrive at the restaurant.

Please visit www.societyhillcivic.org to purchase tickets or mail your check for \$15 per person to SHCA with your name(s): SHCA, P.O. 63503, Philadelphia, PA 19147

Any questions, please e-mail Mattdejulio@aol.com.

Society Hill residents who are not members are most welcome to join us and meet their neighbors if they sign up for SHCA membership and remit the \$15 per person cover charge.

WEDNESDAY

November

14

MARK YOUR CALENDAR

Society Hill Civic Association Meeting
Wednesday, November 14, 2018

5:45 p.m. Board Meeting
Pennsylvania Hospital's Great Court Room

7:30 - 9 p.m. General Membership Meeting
Pennsylvania Hospital's Zubrow Auditorium

Speakers: Anuj Gupta, Reading Terminal Market General Manager; Layla El Tannir, Special Projects Director

Topic: The Reading Terminal Market-Then and Now

ROLL UP YOUR SLEEVES



Grab a rake this December 1 and join your neighbors for Fall Clean-Up Day. Learn more on page 5.
Photo by Bonnie Halda

parallel design

Find our designs online.

BeyondTheLibertyBell.org
Parallel-Design.com
SusieMeissner.com
 215-476-4040

Logos
 Websites
 Banners
 Books
 Brochures
 Invitations

Newsletters
 The Award-Winning Society Hill *Reporter*



SOCIETY HILL

Reporter



Editor in Chief
 Sandra Rothman

Columnists
 Marilyn Appel,
 Jane Biberman,
 Claudia Carabelli,
 Al Cavalari, Matt DeJulio,
 Mike Harris,
 Martha Levine,
 Rosanne Loesch,
 Sandra Rothman,
 Richard De Wyngaert

Contributors
 Lisa Kelly,
 Vivienne Woodward

Graphic Design
 judy@parallel-design.com

Press Release Liaison
 c/o Matt DeJulio
 mattdejulio@aol.com

Advertising Manager
 Lenore Hardy
 hardy@drexel.edu

Submission Deadline
 January/February Issue
 December 1

Society Hill Civic Association
 P. O. Box 63503
 Philadelphia, PA 19147

Tel. 215-629-1288

Website
 Find past issues in color
 at www.societyhillcivic.org

The views set forth in the opinion articles are the views of the authors and are not necessarily those of SHCA.

Submissions

If you have news that would be of interest to Society Hillers, email Sandra Rothman at sandra.rothman@aol.com. Materials must be submitted in writing and include the name of a contact person. Edited submissions will be considered for publication if space permits. Letters to the Editor must be signed, with contact information.

SHCA Mission Statement

The aims and purposes of SHCA are: to promote the improvement of the Society Hill area of Philadelphia, including its cultural, educational and civic activities, and the preservation and restoration of its historic buildings; to represent the residents of Society Hill in matters affecting the City of Philadelphia generally and Society Hill in particular; and to interpret the value and significance of Society Hill to the public.

SHCA Board Officers and Directors

President
 Rosanne Loesch

First Vice President
 Martha Levine

Second Vice President
 Mary Purcell

Treasurer
 Woody Rosenbach

Recording Secretary
 Camille Orman

Directors at Large
 Claudia Carabelli, Bill Jantsch,
 George Kelley, Robert Kramer,
 Madeline Miller, Ben Speciale,
 Mary Tracy, Lisa Unger

Quadrant Directors
 Northeast: Lorna Katz, Dave Rucki, Brian Wengenroth
 Northwest: Amy DeMarco, Wendy Glazer, Sissie Lipton

Southeast: Jeff Berry,
 Joe Dillon, Barbara Gelman
 Southwest: Susan Collins,
 Larry Spector, Kim Williams

Continuing Director
 Bob Curley

Condominium Representatives
 Hopkinson House:
 Concha Alborg

Independence Place:
 Jerry Yablin
 Penn's Landing Condos:
 Loretta Burton
 Society Hill Towers:
 Terry Conn

St. James Court:
 Sharon Simon
 The St. James:
 Norm Liberman

COMMUNICATION MADE EASY

mediacopy | ON DEMAND PRINTING SOLUTIONS
IMAGING YOUR VISION

Media Copy is a full service digital printing company with offices in Center City Philadelphia, and the suburbs. State of the art technology, extraordinary customer service and attention to detail place us apart from the competition. Our infrastructure allows us to provide our customers with high quality products in a cost effective fashion. From conception to completion, the basic to the complex, we are on the job with the personal attention you should expect.

Philadelphia Location:
 1310 Sansom Street · Philadelphia, PA 19107
 phone: 215.717.5151 · fax: 215.717.7400

Media Location:
 11 East State Street · Media, PA 19063
 phone: 610.566.8499 · fax: 610.566.4513

www.mediacopyonline.com

P R E S I D E N T ' S M E S S A G E

BY ROSANNE LOESCH

Supporting Local Food Markets

It's not always easy finding time and funding to support the historical resources that make life in the Philadelphia area so interesting and meaningful. In our neighborhood of Society Hill alone, we have much to care for and keep relevant: our beautiful house museums, the Physick House and Powell House, owned and maintained by the Philadelphia Society for the Preservation of Landmarks; the Morris House Hotel, privately owned and maintained as a boutique hotel; historic churches, synagogues and cemeteries; privately owned homes and shared walkways; historic Washington Square and Pennsylvania Hospital — the nation's first hospital.

But we also have a wealth of historical resources just outside our neighborhood. One of them is easy and fun to support, although we don't always think of going there to food shop. I am thinking of the Reading Terminal Market, celebrating 125 years in 2018 and just blocks away from Society Hill. The week before Thanksgiving, SHCA's bi-monthly community meeting will feature a presentation by the market, which should inspire some of our holiday food shopping.

Reading Terminal Market is one of the first places I take new visitors to Philadelphia, because it is unique. Our French relatives and friends are always amazed that such a diverse and unexpected shopping experience is available in the

U.S. (They've seen too many American movies!) They especially love to see the Amish corner of the market, and are duly impressed with the abundant farm fresh foods and the animation of the shopping experience at Reading Terminal.

Of course, we will always value the convenience and neighborliness of our own Acme supermarket on 5th Street, which our residents fought so hard to keep in a recent battle with forces that didn't see a future for it. The 5th Street supermarket itself dates back to the redevelopment period of the mid-20th century, which spurred the complete renewal of the Society Hill neighborhood. Back then, pioneers restoring the homes in Society Hill needed the small commercial center that was created on 5th Street, and present-day residents still do.

So we can have two shopping experiences: one supporting our beloved local store and one supporting the amazing and vibrant historical market that is Reading Terminal. Please join us to learn what's new at the Reading Terminal Market at SHCA's community meeting on Wednesday, November 14 at 7:30 p.m.

Rosanne Loesch is an attorney and former president of SHCA. She, her husband and two children have lived in a historic house on Spruce Street since 2002 and, before that, lived for 14 years in the Washington Square West neighborhood.



Rosanne Loesch,
SHCA President



SHCA wishes everyone a joyous holiday season!

D O N ' T D E L A Y , R E N E W O R J O I N T O D A Y !

SHCA was established in 1965 and from the start dealt with issues that threatened Society Hill. Your civic association has been there for 53 years to advocate for the neighborhood and, by extension, your property values.

What does SHCA do for you? Why should you join? Why should neighbors living in high-rise buildings who pay their own association fees join?

Besides providing funding for our many neighborhood improvement projects, such as graffiti control, weekly sidewalk cleaning and plantings in Washington Square, our board advocates

on your behalf regarding zoning changes, real estate taxes, crime problems, ramp issues, trash receptacles, street lighting, bus re-routing, etc.

Renewal notices for 2019 were recently mailed to all residents. You can join or renew by sending back the form in the notice or the form that can be found on Page 29 of this issue. Our website, www.societyhillcivic.org, makes it easy to pay by credit card or with your PayPal account.

Remember to renew before December 31 if you wish to be placed in a drawing for a gift certificate to a local restaurant.

In This Issue...

Page 6
Stepping Back in Time:
The John Ross House
Page 10
Making A Difference:
Fighting Poverty in the
City of Brotherly Love

Page 13
Keeping Posted:
Some Interesting
Historical Perspectives
Page 16
Out and About: Waxing
Poetic This Season

Page 18
South Street Headhouse District:
Downtown Dining, From Donuts
to Empanadas
Page 22
On Our Shelf:
Richard's 2018 Holiday Picks

Page 25
Headhouse Farmers' Market:
Ashbell's Brings the South to
The Market
Page 30
Our Creatures Great and Small:
The "Wolf" of Gaskill Street

McFarland's Value Proposition

Experienced and Educated

Since 1958, McFarland Tree, Landscape and Hardscape Services has provided arboricultural service throughout Greater Philadelphia. Our comprehensive experience is augmented with continuing education and researched understanding of the practices of modern arboriculture along with our past experience. Staffed with a Board Certified Master Arborist and Certified Arborists, McFarland stays informed about current conditions and issues affecting your trees, shrubs and ornamentals.

Service

We answer the phone when you call during business hours. Now, that's different! We are in constant contact with our arborists and field personnel to provide timely responses to your needs. A knowledgeable arborist will visit with you to discuss your needs and concerns. Seasoned veterans with well-maintained tools and equipment will perform the agreed-upon services to your satisfaction.

Quality

Our recommendations are based on observations and a consultative approach that identifies your needs and expectations, tempered with our concern to maintain and improve the health, appearance and safety of your landscape. Custom pruning achieves the landscape appearance you desire while being performed to the specifications of proper arboricultural practices. Plant Health Care services include a thorough inspection before any

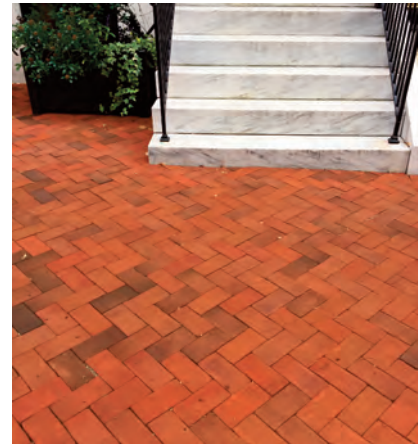
treatment so that we apply materials only when and where they are needed. Landscape projects are meticulously executed and guaranteed.

Distinctive

McFarland Blue trucks, uniformed personnel, attention to detail and thorough clean-up of your property help differentiate McFarland. Our management of your landscape can be total or selective, depending on your needs and budget. If we cannot immediately identify the cause of a landscape problem, we will research the issue until we have solid answers to report to you. As a second-generation business, we have been satisfying our clients with a lifelong-relationship approach to service.

Fix Your Bricks

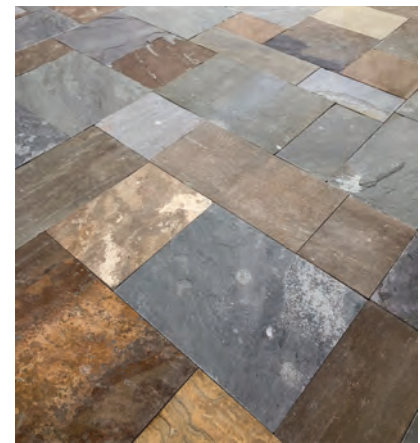
Brick sidewalks in Society Hill and downtown Philly are being renovated to provide a smooth, safe walking surface for pedestrians. We have experience and have repaired many sidewalks and patios in the city. The upheaval caused by tree roots can often be carefully corrected without removing or killing trees. Call McFarland to inquire about fixing your bricks.



McFARLAND
Tree, Landscape, Hardscape
& Construction Services

215-844-TREE

www.mcfarlandtree.com



FALL CLEAN-UP DAY

Winter is Around the Corner

Twice a year SHCA sponsors Clean-Up Days, encouraging neighbors to join together to tidy our sidewalks and streets. It's especially important that we do so before winter mixes ice and snow with bricks and cobblestones, making walking treacherous for all of us. We hope to see each and every one of you on Saturday, December 1, contributing your share to keeping our community safe and beautiful.

This year, sweeper trucks will be on the streets on Friday evening, November 29, to pre-clean before cars are moved to the alternate side. We ask you to sweep around your house and on your block. Remember to get those gutters cleared, as well as nearby walkways and alleys, before the city's sweeper trucks come back sometime between 8 a.m. and noon. Consider stepping up to the plate if you notice your neighbor is away or a rental property needs a little TIC. And let's not forget Three Bears Park!

It's worth noting that because of city budget cuts, SHCA is picking up half of the bill for the sweeper trucks this year. Trash bags will be available, handed out by SHCA's Clean-Up Day volunteers, at the South 5th Street Acme Market, from 8 a.m. until 1 p.m. Your bagged leaves and street litter, but no household trash, should be left by noon at intersections on Locust, Spruce, Pine or Lombard Streets, where they cross the numbered streets.

Wherever signs are posted, cars must be moved to the opposite side of the street after 6 p.m. on Friday night, or they could be ticketed on Saturday morning beginning at 8 a.m. Please note that to accommodate Saturday synagogue services, the 300, 400 and 500 blocks of both Spruce and Lombard Streets will be swept by 8:30 a.m. — leaving the south side of these streets available for congregants to park their cars. All streets will be swept from Front to 8th and from Chestnut to Lombard Streets. There will be no parking on

either side of the 300 and 400 blocks of Front Street or the 200 and 300 blocks of 2nd Street and Lawrence Court. Although "Other Side Parking" signs will generally read "from 6 p.m. Friday until 2 p.m. Saturday," Society Hill's block coordinators are encouraged to remove these signs as near to 1 p.m. as possible in order to permit cars to be moved back to their usual side of the street between 1 p.m. and 2 p.m. and prevent those cars from getting ticketed.

Shredding and Recycling

December 1, 10 a.m. to 1 p.m. (earlier if the truck reaches capacity) Because we moved Fall Clean-Up Day back later this year to ensure that trees have dropped most of their leaves, St. Peter's is unable to provide their parking lot for shredding and recycling services. Our weekly email blasts will keep you updated.

The shredding service is for the convenience of Society Hill residents only — sorry, no businesses. It is only for confidential materials; non-confidential papers should be recycled, not shredded.

- Only paper is accepted. No CDs or disks.
- Electronic recycling will take anything with a plug, except televisions and computer monitors.
- No large appliances like refrigerators or washing machines. Also, no smoke detectors are accepted.

If you use these special services and are not yet an SHCA member, please consider joining SHCA by simply filling out the form, either on page 29 of this newsletter or online at societyhillcivic.org. Any questions? Call 215-629-1288.



Photo by Bonnie Heida

Clean-Up Day provides the perfect opportunity to tackle those chores you've been putting off!

Whole home control, designed to seamlessly match the way you live.

SPRINGBOARD
AUTOMATION

Integrated lights, sound, temperature and more with a simple touch or voice command.

(215) 599-0794
smarthome@springboardmedia.com
springboardautomation.com

STEPPING BACK IN TIME

BY SANDRA ROTHMAN

The High Cost of Patriotism

A walking tour through local history.

For those interested in history, Philadelphia is a superb place to “step back in time.” Our city has always been very good at record keeping, and its archives have never suffered losses due to natural disasters. Not only do we have sites and artifacts going back to William Penn and beyond, there are most likely papers documenting them.

When I discovered that George Washington’s career was more closely tied to Philadelphia than any other American city, I used records at the Historical Society of Pennsylvania, 1300 Locust Street, to help find connections between our first president and Society Hill. I was delighted to learn that George once had afternoon tea at his friend John Ross’ new house at 2nd and Pine Streets, a short walk from my own home.

A Wealthy Patriot

Born in Scotland in 1729, John Ross (not to be confused with Betsy’s first husband) came to Philadelphia in 1763 and accumulated, before the Revolution, considerable riches as a shipping merchant. As conflicts between the colonies and Great Britain escalated, Ross turned into a rebellious patriot, described by many as fiercely independent.

He was chosen muster-master of the Pennsylvania Navy in 1775, but resigned the following year to concentrate on his commercial affairs. Just a few months later, however, Ross was employed by Congress to purchase clothes, arms and powder for the Continental Army. As part of this assignment, the merchant traveled to Amsterdam, Nantes and Paris to establish connections with financiers and suppliers of the needed military goods.

Unfortunately, in a decision that would haunt him through his life, Ross pledged his own credit on behalf of Congress to purchase supplies for the sum of 20,000 pounds sterling, worth an astounding \$3,340,601.25 in today’s currency.

A Palatial Mansion

The house where Washington enjoyed tea on May 24, 1787 still stands, its fate



The Ross House in 1932 and as it is today.

rising and falling with that of the neighborhood. I was able to trace this trajectory at the Philadelphia City Archives, 548 Spring Garden Street, which contains property deeds for Philadelphia County dating back to 1683.

The large lot Ross purchased for 800 pounds from William Peters in 1775 was situated in Philadelphia’s premier location at the time, evidenced by its price equaling \$133,624.05 today. The townhouse he subsequently built for his wife, the former Clementina Cruikshank, their son and four daughters was palatial by any standard. Surviving records describe the three-and-a-half-story, five-bay dwelling as having once possessed some extraordinarily elaborate interior elements, such as 18-foot ceilings, mahogany staircases and wallpaper that today would cost nearly \$200 a panel.

In contrast, the Philadelphia Redevelopment Authority acquired the house in

1961 from the Octavia Hill Association in an extremely dilapidated condition, mirroring the slum-like nature of the surrounding environs. In between these two snapshots in time, the structure served a variety of uses. It was converted to a hotel in the mid-nineteenth century and was later used for various commercial purposes. During this period, the building underwent numerous alterations, including the introduction of a commercial storefront on the ground floor.

No Good Deed Goes Unpunished

When John Ross died suddenly in March 1800, his family discovered to their great dismay that his estate was in tatters. Although it appears that the Continental Congress had issued an order dated August 11, 1778 to repay Ross for his substantial outlay on their behalf, the commissioners had no funds to do so. Ross besieged Benjamin Franklin, who was in Paris at the time, with countless letters begging the august statesman to intervene with Congress on Ross’s behalf. One dated April 24, 1779 intimated that he was desperate, that “ruin is immediate and unavoidable, as he has bills running upon him which he accepted in perfect confidence and reliance... that Congress would faithfully comply with...”

It does not seem that Ross was ever fully compensated for the 20,000 pounds he laid out at the beginning of the war. After his death, his family was reduced to comparative poverty and forced to sell their Pine Street home, as well as The Grange, the family estate in Haverford that had once belonged to Clementina’s father, Captain Charles Cruikshank.

Today we know that George Washington’s army struggled constantly with the lack of almost everything. It’s intriguing to ponder whether Ross’ personal sacrifice provided just enough war matériel to help the troops turn the tide against Great Britain and win the Revolutionary War.

continued on Page 7

STEPPING BACK IN TIME

continued from Page 6

A Grand Dame of Pine Street Lives On

Together John Ross’ mansion and our community limped into the twentieth century, each having seen much better days. Things started looking up in the 50s, when city, state and federal governments began one of the first urban renewal programs aimed at the preservation of historic buildings. While most commercial 19th-century buildings were demolished, historically significant houses were restored by occupants or taken over by the Philadelphia Redevelopment Authority and sold to individuals who agreed to restore the exteriors. Fortunately, the structure at the corner of Pine and 2nd Streets was destined for a new life.

Its footprint eventually encompassed several adjacent properties on 2nd Street. Although not of singular architectural or historical importance, they were thought to provide definition to the historic streetscape and to Headhouse Square.



Denticulated and modillioned wood cornice



Marble keystone lintel

Cope Linder Walmsley Architects was hired by then-owner Wayne Spilove in 1978 to restore the exterior of the enlarged Ross House to the standards of the times, since virtually nothing of its former grandeur remained nor were there original plans to consult.

The Philadelphia Historical Commission, 1515 Arch Street, shared with me a fat

folder documenting this restoration. Here I came across impressive terms like marble keystone lintels, doe-leaf wood gate, a pedimented wood frontispiece with fluted pilaster and punch and gouge and reeding detailing, and most captivating, a denticulated and modillioned molded wood cornice.

The endeavor was such a success that the Pennsylvania Historical Museum Commission awarded it a citation for “an outstanding rehabilitation project, which has returned a property to a state of utility (through repair or alteration), while preserving its historical and architectural features.”

Today the building is owned by Pen-Del Management Company, which leases out office space on the upper floors, while the Society Hill Dance Academy occupies the entire bottom level.

Sandra Rothman, a retired educator for the school District of Philadelphia, is the *Reporter’s* editor in chief.

READING TERMINAL MARKET
since 1893
12th & Arch Streets
Philadelphia, PA 19107

SHOP LOCAL
A PHILADELPHIA TRADITION

Take advantage of the fresh produce, meats, dairy, seafood, spices & baked goods that the Reading Terminal Market has to offer.

Best time for locals to shop:
8 AM - 11 AM & 4 PM - 6 PM

Diverse. Charming. Inspiring. Delicious.
Shop Reading Terminal Market. All under one roof.

215-922-2317 ♦ ReadingTerminalMarket.org
Open Every Day 8 AM - 6 PM

[RdgTerminalMkt](https://www.facebook.com/RdgTerminalMkt) #LoveRTM

ST. PETER'S SCHOOL
PRESCHOOL (3 YEARS OLD) THROUGH EIGHTH GRADE

COME VISIT US!

INDEPENDENT
NON-SECTARIAN
COEDUCATIONAL

319 Lombard Street, Philadelphia, PA 19147
215.925.3963 | st-peters-school.org



All Gloria Dei's venerable trees remained standing in Hurricane Sandy, preserving the historic graves below.

HISTORIC TREES UNHURT IN HURRICANE SANDY

... Thanks to Liberty Tree & Landscape Management

When Hurricane Sandy pummeled the city in late October, 2012, not one of the many 200+-year-old trees at Gloria Dei Church on Columbus Blvd. came down. Pastor Joy Segal credits that feat to the outstanding work of Liberty Tree and Landscape Management.

See why so many people recommend Liberty Tree on Angie's List. *Your satisfaction is guaranteed!*

Some Other Liberty Tree Clients:

- Pennsylvania Hospital* *Elfreth's Alley*
- Rittenhouse Square* *National Park Service*
- Washington Square* *Bartram's Garden*
- Philadelphia Cricket Club*



215. 886. 6111 | Oreland, Pa
 215. 725. 3637 | Philadelphia, Pa
 215. 572. 6937 | Fax
 www.libertytreecare.com

Mike Duffy
 Certified Arborist
 PD-1766A



Looking for the Calm of Spirit?

Our Church invites the community to join us for spiritual growth through:

- Sunday & Wednesday Services**
- Sunday School for Children • Reading Room
- Sunday Service:** 11AM • **Wednesday Evening Meeting:** 7:30PM
- Reading Room Hours:** Monday: 11AM to 1:30PM, Wednesday: 2PM to 7PM
- Thursday and Friday: 11AM to 4PM Saturday: 11AM to 1:30PM

FIRST CHURCH OF CHRIST, SCIENTIST, PHILADELPHIA
... Supporting healing for all mankind

225 Chestnut Street, Philadelphia, PA 19106
215-922-0828
 visit us at: firstchurchcsphila.org

The CENTER for GROWTH

psychological counseling • therapy • support groups

**Achieve Greater Joy
 Deepen Intimate Relationships
 Get More Satisfaction Out of Life**

- Individual Counseling
- Couples Therapy
- Sex Therapy
- Imago Counseling
- Support Groups

**Call For Appointment
 (267) 324-9564**



233 S. 6th Street, Suite C33, Philadelphia, PA 19106
www.therapyinphiladelphia.com

SAFE AND SOUND IN SOCIETY HILL

BY MARILYN APPEL

Tips From Our 6th District Police

To prevent theft of and from auto:

- Never leave valuables in your car. Or, if necessary, keep them out of sight.
- In a public parking lot or garage, leave only the ignition key with the attendant.
- Never leave anything listing your home address in your car or with your keys.
- Get a steering wheel locking device.
- Lock your car with your remote by clicking three times to avoid someone getting the lock code.

Home burglary prevention tips:

- Lock all doors and windows, including garage doors.
- Install outside lights and put them on at night.
- Cut back shrubbery and trees, so a thief can't hide.
- Anything suspicious, call 911.

To help prevent identity theft:

- Monitor your credit.
- Use credit cards instead of debit cards.
- Check your health insurance statements carefully to prevent fraud.
- Use a password manager.
- Be careful when ordering online.

What to do if identity theft happens:

- Call an expert such as www.idtheftcenter.org.
- File a report with the FTC.
- Issue a fraud alert to one of the three big credit-reporting companies to hold any new activity. They are www.experian.com; www.equifax.com; and www.transunion.com.

SHCA Supports 6th District Police



SHCA Vice President Martha Levine presents a check of \$1,500 for a much-needed new officer bicycle to the 6th District Police.

BIG BELLIES

BY MARTHA LEVINE AND WOODY ROSENBACH

Keeping Society Hill Litter-Free

History:

Back in 2009, the City purchased 500 Big Belly solar compactors and recyclers and installed them all over Center City and other neighborhoods. In Society Hill, these units are meant for the thousands of visitors we attract, especially headed to and from South Street, not for residents.

Fast forward to today.

Two problems exist:

- Some residents are wrongly using the Big Bellies to regularly deposit their own household trash, causing the units to overflow. Some trash bags are left next to the trash cans, which is a health hazard (think vermin).
- The City needs to have more frequent collections — many units are overstuffed and unable to receive more trash.

Also they smell bad. A blinking red light means the unit is full. SHCA is working with the City on an ongoing basis to continually improve the service levels.

How You Can Help:

Hold onto your trash for your trash collection day! If you live between 6th and Front Streets, your day is usually on Friday. If you live between 6th and 8th Streets, it is on Thursday. National holidays cause a one-day delay. **Put trash out after 6 p.m.** Violators can receive hefty fines.

Look for new signs on the Big Bellies reminding you — No Household Trash! Avoid a fine of \$150 for violations. To report a violation, call 311.



Putting bags of household trash next to Big Bellies is a health hazard and a violation carrying a hefty fine.

MAKE A DIFFERENCE

BY CLAUDIA CARABELLI

Fighting Poverty in the City of Brotherly Love



Valentine's Day at Episcopal Community Services, St. Barnabas Mission

If you're reading this, chances are you live in or near Society Hill. There's a high probability that you have the education, housing, health insurance, food and financial security to manage a home without going broke. You likely have no firsthand experience with real, crippling deprivation. Food insecurity, substandard housing and chronic unemployment (or underemployment) have not been a mainstay of your life.

Yet Philadelphia is the poorest of the ten largest U.S. cities. Twenty-six percent of our fellow citizens live in poverty with 14 percent in "deep" poverty — subsisting at 50 percent or below the federal poverty level. The median household income in our city is \$39,759 — the cost of a car for many of us, but an entire year's wages for some. The U.S. Census Bureau reports that almost 32 percent of American children live in poverty. For many, their only consistent meals are those provided in school or summer programs.

How can we even begin to tackle such an overwhelming problem? While it's reasonable to think that stable housing and a job will lead to financial solvency, in many cases that may not be enough. The reality is that chronic, entrenched and often generational poverty is very complicated.

Episcopal Community Services (ECS), headquartered right in our neighborhood at 225 S. 3rd Street, has been fighting the good fight to lift people out of poverty since 1870. They have a fascinating history of adjusting their mission to meet the needs of the time. You can read about this in more detail on their website: www.ecsphilly.org.

At their founding as the Philadelphia Protestant Episcopal City Mission, they opened a home for TB treatment, cared for sick women, provided long-term assistance to families after the Spanish-American War and operated a prison ministry at Eastern State Penitentiary.

In 1930, they began to organize a foster care system and 20 years later offered family counseling. By the 1960s, they were providing services to children in their homes and subsequently initiated medical case management and inmate family supports.

In 1999, ECS merged with St. Barnabas Mission in West Philadelphia. This is where they currently provide emergency housing to women and children and operate a Community Food Cupboard.

The 2000s saw the beginning of their "Out Of School Time" after-school tutoring, and an Adult Literacy and Permanent Housing Program.

The mission of ECS is to "challenge and reduce intergenerational poverty." Their three-year strategic plan is based on a brain research-informed model to work with Philadelphians to help them find their path to upward economic mobility.

Like most social service providers, ECS is always in need of financial support. To contribute, click "donate" on their website. It's easy to make a one-time or recurring gift via credit or debit card.

If volunteering is more to your liking, there are many different opportunities based on your time and availability.

Community Cook-Off meets monthly to assemble over 200 dinners to distribute to frail, aging adults in our city. This occurs the 3rd Sunday of every month at St. Barnabas Mission, 6006 West Girard Avenue.

Be a Companion carefully matches volunteers to isolated older adults, living either in their homes or in nursing or assisted living facilities.

Serve a Meal gives volunteer groups the chance to provide or serve a meal at The Darby Mission.

Afterschool Tutor helps elementary and middle school students with academics in their "Out of School Time Program." Clearances are required.

Children's Party/Activity Host lets you host a children's party at St. Barnabas Mission. You pick a theme and provide snacks, crafts and games. A fun chance for you and your friends to get creative.

Speed Networking Panelist lets you share your personal career story with young adults in their Workforce Development Program.

Lead a Goods Drive is a chance to organize a donation collection in your community or at your workplace.

Community Food Cupboard can use individuals or groups to help organize the food pantry at St. Barnabas and assist with food distribution.

If any of this sparks your interest, visit www.ecsphilly.org/volunteer or e-mail volunteers@ecsphilly.org. You'll gain a lot by giving just a little.

Claudia Carabelli serves SHCA as a director at large.

MAKE A DIFFERENCE

Reaching Out at the Holidays

That “most wonderful” time of year is upon us once again. Holiday music permeates retail establishments, seasonal decor is everywhere and TV is filled with images of idyllic family gatherings interspersed with commercials for gifts we must buy. No matter what holiday you celebrate, I’m pretty sure it wasn’t built on a foundation of scoring a big screen TV at a 3 a.m. Black Friday sale. If you’d like to drown out the ubiquitous seasonal tunes, step away from difficult relatives and avoid the crush of desperate shoppers, how about volunteering time for others? Here are some options in our area.

Thanksgiving

Old Pine Community Center (401 Lombard Street) hosts HIAS Refugee Thanksgiving on Sunday, November 18th from 3 to 6 p.m. Aided by the efforts of the Society Hill Synagogue, volunteers collect, cook and serve food to our newest arrivals. Most have never celebrated the holiday so need some introduction to traditional American food. It’s a great reminder of how much immigrants value their new life in the U.S. Contact community@hiaspa.org for information.

Food

St. Peter’s Food Cupboard continues to have a high demand over the holidays. To help on Tuesdays at 4 to 5 p.m., Thursdays at 5 to 6 p.m. or Saturdays at 7:45 to 10 a.m., visit www.stpetersphila.org/foodcupboard.

Holiday Gifts

Episcopal Community Services seeks to ensure that each child they serve receives a holiday gift. They need volunteers to receive, organize, wrap and distribute gifts to children. Hours are flexible at 225 S. 3rd Street. Contact Jessica Main at jessicam@ecsphilly.org or 215-351-1406.

Police In Our Community

The Philadelphia Police have traditionally hosted holiday toy drives and/or children’s parties. Details are not yet finalized but feel free to call or stop by to see how you can help.

The 6th District is at 235 N. 11th Street. Contact Officer Julie Carpenter at 215-686-3060.

The South Street Mini-Station is at 905 South Street A, 215-922-6706.



IN THE CITY AND OF THE CITY

OPEN HOUSES

Thurs., Nov. 8
8:45 a.m.
Grades Pre-K - 4

Thurs., Nov. 15
8:45 a.m.
Grades 5 - 12

FRIENDS SELECT

Quaker Education for Students in Grades Pre-K through 12

FRIENDS SELECT SCHOOL 17th & Benjamin Franklin Parkway, Philadelphia, PA 19103 215.561.5900



Ants Pants
ON 4TH

(215) 309-2877
526 S. 4th Street
www.antspantscafe.com

OPEN DAILY
8:00 AM - 4:00 PM



SYNERGY
HomeCare | Care for Everyone


We Offer Companionship,
Personal Care, Light Housekeeping,
Meal Preparation and Much More!

Call for your FREE Care Assessment!
267.499.4700
synergyhomecare.com/philadelphia

ADORNAMENTI

1106 Pine Street
215.922.2722

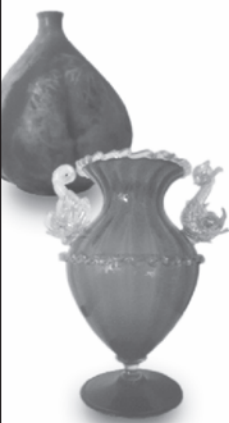
Collection
of
Art-To-Wear Jewelry



SHOW OF HANDS

1006 Pine Street
215-592-4010

Collection
of
**Mid-Century Murano Glass
and
Contemporary Crafts**



We contribute to Welcome Basket.
We are located on Historic Antique Row.



Ready to make a move?

Whether you've been looking to buy your first house, upgrade to a larger home, or even find the condo of your dreams, the spring and summer seasons are the best time. And who better to trust than the number one team in Philadelphia?

Mike McCann "The Real Estate Man" and The Mike McCann Team have over 30 years' experience and have been consistently ranked as the number one team both in Philadelphia and throughout the entire Berkshire Hathaway network. Why settle for less when you can use the best?

MIKE MCCANN
"The Real Estate Man"
The Mike McCann Team

**BERKSHIRE
HATHAWAY**
HomeServices, Fox & Roach

215-627-6005 [Office]
215-440-8345 [Direct]
mccann@mccannteam.com
www.mccannteam.com

KEEPING POSTED

BY AL CAVALARI

Some Interesting Historical Perspectives

To commemorate Veterans Day, November 11, we look at a post card showing the First Telegraph Battalion, Signal Corps United States Reserve. Independence Hall group photos are common. However, this one is unusually striking not just for its image, but for the identity of these men. The battalion was recruited from telephone employees of the largest communication organization in the world, the Bell System companies. Four months after receiving its first military training, the unit was at war in France where it served throughout the entire U.S. participation in WWI.

The government turned to the Bell System, which had been at the forefront in developing advanced communication systems. When a flyer was sent to all its male employees, volunteers numbered nearly seven times the number that could be accepted. The most experienced among them became the officers. They numbered 225 officers and enlisted men.

Next, if you are accustomed to seeing the Liberty Bell in its modern day setting across from Independence Hall, you might be surprised to see this post card showing it on display in San Francisco. On July 5, 1915, the bell left Philadelphia by train and traveled west to be on display at the Panama Pacific International Exposition. That world's fair was officially promoted to celebrate the opening of the Panama Canal, and it was widely seen as a way to give a boost to San Francisco, which was bouncing back from an earthquake in 1906. The fair was built on about 650 acres of the Presidio, which is now part of Golden Gate National Recreation Area.

July 17 was proclaimed "Liberty Bell Day." The bell was paraded through the streets of San Francisco to the Pennsylvania Building at the exposition. This post card shows the float that carried the bell that day. It is an example of how the back of a post card can enhance the card's interest and value. It was mailed one hundred years ago at a special post office set up at the exposition itself. Note the commemorative postal cancellation. The sender writes "The Liberty Bell on its triumphal journey to 'Frisco. It is now in the Penn. Building and is to return by way of the southern states."

On November 11, 1915, the bell left the Panama-Pacific International Exhibit in San Francisco for the Panama-California exhibit in San Diego. It was on display there until November 15 and arrived



This postcard from 1917 shows the First Telegraph Battalion, 225 volunteers recruited from the Bell System, assembled at Independence Hall.



The float that carried the Liberty Bell through the streets of San Francisco on the way to the world's fair in 1915 is shown here.



The back of the postcard shows that it was mailed from a special post office set up at the exposition.

back home to cheering crowds on November 25. It had traveled 10,000 miles through some 30 states and was seen by millions of people.

Visit the bell today and look underneath it. Notice the metal bracket, called a spider, which grips and holds the bell from inside. There was a debate over whether to remove the protective spider that had been installed to stabilize the bell during its trip. Patriotic groups and the Franklin Institute metallurgist argued that if it were removed the bell would fall apart. City officials decided to err on the side of caution, which is why the spider remains with us to this day.

Al Cavalari is a certified member of the Association of Philadelphia Tour Guides. For a day job, he operates the Flag Guys®, a flag business in upstate New York. Send comments to Al at flagguys@aol.com.

BELL CLEANERS @Society Hill Towers

- ❖ Free pick-up & delivery
- ❖ Free storage for winter clothing & comforters after cleaning
- ❖ Professional tailoring & alterations
- ❖ Wash & fold services
- ❖ House cleaning services



- ✓ Wedding gown cleaning & storage
- ✓ Draperies & curtains
- ✓ Rug cleaning
- ✓ Shoe shine & repairs
- ✓ UGG boot cleaning

247 St James Place | (215) 925-2888

TREE TENDING

SHCA offers property owners 50 percent of the cost of removing and replanting a dead street tree, up to \$500 for SHCA members and up to \$400 for non-members.

Submit to SHCA:

- proof of the tree and stump removal (invoice from licensed vendor who did the work).
- proof of the cost of the removal and the planting of a replacement tree (cancelled check — front and back).

SHCA will also reimburse a property owner up to 50 percent of the cost to hire professional services to prune their street tree, up to \$300 for SHCA members and \$200 for non-members, every two years.

Submit to SHCA:

- proof of the tree pruning expense (invoice from licensed vendor who did the work).
- proof of the cost of the pruning (cancelled check — front and back).



Your Home Sold Guaranteed or We'll Buy It!*

Call Larry...and Start Packing!



No Gimmicks! For Information on My Exclusive Guaranteed Sale Program, Order a FREE Report by Visiting

www.livelovephilly.com/guaranteed_sale_program

or Free Recorded Message:

800-560-2071 ID# 2072

or Call Larry Directly at:

267-808-6565



LIVE LOVE PHILLY



*Larry Levin will act as a Real Estate Agent or Broker and Possession Date Standards based on Right to Buy date.
This is not intended to solicit homes that are currently listed for sale with a Real Estate Broker.

Not only did **Larry** overcome my concerns, but he got the home sold in a week at **\$5000 over the asking price!**

Brian and Maggie Garmant

4 BIG REASONS to Call Larry To Sell Your Home!

Larry Levin

VS

The Average Team

1 WE HAVE MORE BUYERS - We Have More Buyers - We have almost 12,000 buyers in our database. These buyers are receiving property alerts, so Your Home May ALREADY BE SOLD!!!!



2 WE SELL FOR MORE MONEY →



3 WE WILL GET YOUR HOME SOLD FASTER
18% FASTER



→ **4 MORE LIKELY TO SELL**
31% MORE



WEED PATROL UPDATE

Pulling, Bagging, Sweeping, Spraying

BY CLAUDIA CARABELLI

“Neither snow nor rain nor heat nor gloom of night...” The postal service doesn’t have much on Society Hill’s tenacious Weed Patrol. Despite the unflagging heat and humidity, we’ve been out almost every week pulling, bagging, sweeping and spraying. You may have noticed the remarkable improvement in certain areas. Passersby have stopped to offer their appreciation, with a few subsequently joining the team.

Weed Removal Updates

Our goal is to give homeowners a jumpstart on weed control. We’ve been discouraged by some areas that we’ve had to clear a second time. Please do your part.

Some of the worst offenders are empty properties (see S. 3rd Street hydrant photos). Maintaining the outside of your home is your responsibility even before you move in.

Delinquent/absentee owners are clearly the biggest culprits. We will be making more of an effort to identify these individuals and take whatever steps possible through city code enforcement.

On the upside, we’ve met many wonderful neighbors who not only keep their residences beautiful, but also take on the care of common areas. Kudos to you!

Winter Tree Care Reminders

Rock Salt is toxic to trees. Please don’t spread it on or near tree beds. Tree-friendly alternatives are available at www.treephilly.org/winter-tree-care.

Holiday Lights can “strangle” a growing tree if left on year after year. Be sure to also remove tight straps that can damage the trunk.

Prune your tree during the optimal winter months. Dead or damaged branches are especially prone to break off with the added weight of snow or ice. Subsidies to offset the cost are available through the Society Hill Tree Tenders: www.societyhillcivic.org.

Mulch nourishes your tree. Follow the “3-3-3” rule: 3 inches deep, 3-inch clearance around the trunk and a 3-foot ring around the tree. Use high-quality licorice root or tree mulch.

Water is especially important for any tree planted within the last two years. Water until autumn leaves drop or turn brown.

Let’s work together to keep Society Hill beautiful.



PARK(ing) Day is an annual, worldwide event where artists, activists and citizens independently (but simultaneously) turn metered parking spots into “PARK(ing)” spaces: temporary public parks and other spaces for people to enjoy. For the second consecutive year, the FRIEDA community proudly presented an installation for PARK(ing) Day. The more than two month-long project involved countless hours collecting plastic bottles and transforming them into 500 unique flowers.

OUT AND ABOUT

Waxing Poetic...

*What is sometimes called a
tongue of flame
or an arm extended burning
is only the long
red and orange branch of
a green maple
in early September...*

**From *Autumn*,
Grace Paley**



OUT AND ABOUT

That Time of Year



*That time of year thou mayst
in me behold
When yellow leaves, or none,
or few, do hang
Upon those boughs which shake
against the cold,
Bare ruin'd choirs, where late
the sweet birds sang.*

**From Sonnet 73,
William Shakespeare**



Bonnie Halda is a freelance photographer specializing in historic buildings and the urban environment. She's also a historical architect with the Northeast Regional Office of the National Park Service.

SOUTH STREET HEADHOUSE DISTRICT

BY CLAIRE BATTEN

Downtown Dining, From Donuts to Empanadas

As the days shorten, we all seek out cozy places for the chilly evenings. Our thoughts often turn to comfort foods, reminding us of happy times and places. Although the South Street Headhouse Business District (SSHD) caters to all tastes, perhaps the thing it does best is casual dining and food that provides a feeling of well being. So we're delighted to announce that the epitome of comfort foods, Federal Donuts, has opened its seventh location on the corner of South and 6th Streets.



Photos by Michael Persico

“Federal Donuts is a Philadelphian success story. The city just can't get enough of its designer donuts and fried chicken,” comments Mike Harris, SSHD's Executive Director. “There's even now an outpost at Citizens Bank Park. It's become as much a part of the city as the Phillies or a cheesesteak!”

Federal Donuts was first established in 2011 around the corner from Federal Street, just north of Washington Avenue. It was the brainchild of five partners, including Michael Solomonov and Steven Cook, the award-winning duo responsible for Zahav, Abe Fisher and a string of other groundbreaking restaurants.

These are not your run-of-the-mill donuts. Fried fresh in the morning,

flavors range from traditional favorites, such as Cinnamon Brown Sugar or Cookies & Cream served “hot-fresh,” to the “fancy” donuts with tantalizing names like Caramel Latte or Key Lime Pie. In keeping with the season, they're offering fall flavors, including Apple Cinnamon and the scrumptious-sounding Pumpkin Pecan Maple.

At 11 a.m. daily, the shop metamorphoses into a fried-chicken joint, turning out perfectly twice-fried chicken with an appetizing choice of batters like za'atar (a Middle Eastern mix of spices), coconut curry or the more regular buttermilk ranch. Feel free to dress up the chicken with a choice of glazes like chili garlic, sweet soy garlic or honey ginger.

Giving Back to the Community.

If you've ever wondered what happens to the mounds of chicken bones left over from the Federal Donuts stores, be assured that they go to a good cause. Ever resourceful, Federal Donuts takes the bones and leftover meat to make stock for soups sold at The Rooster, a community initiative founded by Solomonov and Cook, which gives 100 percent of its profits to Broad Street Ministry.

Federal Donuts is located at 540 South Street. Deliveries are available throughout Center City through Caviar. For more information, visit www.federaldonuts.com.

Malbec, the Argentinian Steakhouse, A Neighborhood Favorite

Located on the corner of 2nd and Pine Streets, Malbec is an established fixture in our neighborhood. The steakhouse is a regular destination for locals and out-of-towners — and for good reasons.

A steakhouse is only as good as its namesake — the steak. At a recent visit, we found that Malbec's ribeye lives up to its reputation: flavorful and cooked to perfection. Accompanied by a salad or the irresistible house fries (the papas fritas caseras), the generously-sized ribeye crowded out any thoughts of dessert. Diners also speak highly of



Photos provided by Malbec Steakhouse

It's always a challenge not to order the delicious empanadas!

the Argentinian empanadas. We tried both the beef and the spinach and mozzarella, which were sensational.

Pine Street resident Donna Rodio, a regular at the steakhouse, reeled off her list of favorites: “We like the Suprema Malbec [chicken breast], the skirt steak and the clams in white wine sauce on the main menu. The dinner portions are generous, so if you're not feeling really hungry, then the happy hour menu is perfect. It's always a challenge not to order the delicious empanadas! The best part of our visits to Malbec is the attentive and friendly service, which surpasses expectations.”

If you've not dined at Malbec yet, be sure to give it a try. Reservations are usually required on weekends, but you can nearly always walk in and eat at the bar.

Malbec is located at 402 S. 2nd Street. To make reservations call 215-515-3899 or visit www.malbecsteakhouse.com.

Claire Batten is a business partner in KCC, a marketing and copy-writing agency.



Hi Tech. Hi Touch.

A Winning Combination—in Person and on the Web!

JUST REDUCED

329 LAWRENCE COURT — \$849,000
(Society Hill between 4th and 5th, Delancey and Spruce Streets) 3+ Story Brick Front Townhome, circa 1866, on charming cobblestone street. Impeccably maintained and lovely layout with a cozy feel throughout. 3 Bedrooms, 2.5 Baths + Sitting Room and 4th Floor finished Loft Room with access to Deck; Finished Basement, Lovely Garden, 2 Zoned HVAC, Alarm System and 3 Fireplaces. 1,937 Sq. Ft. Wide Built-in Circular Stairs. In the McCall Catchment School Area.

HOPKINSON HOUSE #1911

Asking Price \$325K - South Facing 1 Bedroom/1Bath with Balcony. Bathroom totally renovated and Washer Dryer in Clo.

BROUGHT THE BUYERS

L-SHAPED STUDIO UNIT#904

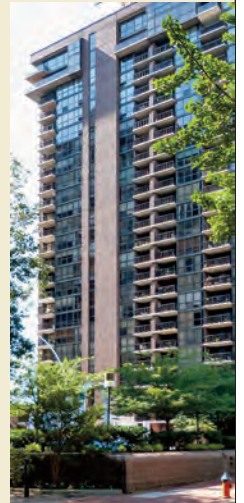
Asking Price \$240K - L-Shaped studio facing Washington Square. Balcony - Beautifully Updated

BROUGHT THE BUYERS

HOPKINSON HOUSE #810

Asking Price \$1,950 - 1 Bedroom off Living Room. Washington Square with Renovated Kitchen

LISTED AND RENTED



Please Note –

I have Qualified Buyers looking for all sizes of Condos and Townhouses. If anyone is interested in selling, please call or e-mail your Neighbor!



Buying? Selling?

Please call or email your neighbor,

Rosemary Fluehr

Associate Broker, GRI

215-514-9884 – Cell rosemary.fluehr@foxroach.com
215-440-8195 – Direct www.rosemaryfluehr.com
215-627-6005 – Office 530 Walnut Street, Suite 480
Philadelphia, PA 19106



BERKSHIRE HATHAWAY | Fox & Roach, REALTORS®
HomeServices



INSPIRED

Builders / Remodelers

Classic
Contemporary
Historic

ORION

www.oriongc.com 610-649-4545

2017 Award Winner - Preservation Alliance of Greater Philadelphia PA 5533

Great Searching For A Good Plumbing, Heating & Air Conditioning Company

the top 5 REASONS TO CALL US FOR ALL YOUR PLUMBING, HEATING & COOLING SERVICE

SHCA MEMBER



Winner 2009-2015



1. REPAIR GUARANTEE If a repair fails during the first year, we will repair it again for FREE
2. JOB DONE RIGHT We will fix it right the first time Or You Don't Pay
3. NO SURPRISES GUARANTEE We will give you a price up-front before starting the work. Once we start the job the price will not change, even if it is more work than we anticipated.
4. FAIR PRICE GUARANTEE No need to shop around. Our pricing is from our Flat Rate Book. If ever in doubt, always ask your contractor to show you their flat rate book to show how they arrived at the price.
5. SECURITY GUARANTEE Our technicians are background checked, drug tested, uniformed and wear company identification

Members of Society Hill Civic Association:
Take \$55. off any plumbing, heating or A/C repair, and \$333. off any heating and A/C installation.



Joseph Giannone

PLUMBING • HEATING • AIR CONDITIONING
www.calljg.com • 215-383-2957



PHILADELPHIA'S PREMIER IN-HOME PERSONAL CARE AGENCY

At Home Helpers, our caregivers undergo a detailed background check prior to employment. As a licensed homecare agency, employees are fully insured and bonded eliminating your financial risk liability. We offer ongoing training in fall prevention and dementia care. Our services include:

- Dementia care
- Fall prevention care
- Personal hygiene
- Light housekeeping
- Medication reminders
- Meal Preparation
- Companionship
- Direct Link Personal Response System
- And much more...

Call Me for a No-Cost Assessment
Patty Grace at (267) 402-7271



I pinch myself every time I come home because I feel so lucky to live here.

The Luxury.
The Views.
The Lifestyle.

THE ST. JAMES WASHINGTON SQ.

200 W. Washington Square
Philadelphia, PA 19106
thestjamesphiladelphia.com
844.762.5416

ON OUR SHELF

BY VIVIENNE WOODWARD

Searching for the Meaning of Disappearance

The Gradual Disappearance of Jane Ashland
by Nicolai Houm

This novel, translated from Norwegian, succeeds in delivering suspense, action and an emotional gut punch in under 300 pages. The story takes place in both Norway and the United States; the narrative weaves between oceans and within time.

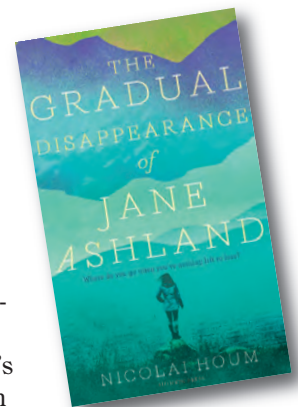
In the first chapter, we learn that Jane Ashland has disappeared, literally, into a snowstorm in the mountains of Norway. She travels to Norway ostensibly to meet a branch of long-lost lineage, but her plans diverge along the way, and she finds herself traversing mountains on an excursion to observe musk oxen with a man, Ulf, she met on her flight from the States. The circumstances are grim in the opening, but we come to understand that her plight is, finally, the literal manifestation of a disappearance that has been months in the making. After a personal tragedy, Jane has shed bits and pieces of herself until she is left stripped almost completely of her former life and self.

The book's greatest strength may be the way it negotiates time. The story shifts from far past to recent past to present between chapters but manages always to land on what feels true to Jane's inner monologue.

Just as her grief has rearranged her entire life, the sequence of events is rearranged, which evokes Jane's inner disorganization. She has already arrived in Norway before the reader understands why she is there. Jane, too, seems at times confounded by the circumstances leading to her trek in the wilderness.

The book follows Jane's emotional landscape, certainly, but it also follows her to a brutal storm-ridden landscape in the Norwegian mountains. One of the things Houm balances so well is Jane's chronic inner turmoil with the very acute tension of her survival, as established on the first page. Readers will not only be compelled by Jane's past, as it is eventually constructed bit by bit, but on the edge of their seats wondering whether she's going to be literally frozen in place.

The book does occasionally feel heavy-handed. At one point in their mountain excursion, Ulf is looking through binoculars and lands on Jane's face. "Do you see anyone?" she asks him. He replies, "No one." Houm is meticulous in his writing, but occasionally he doesn't give his readers enough credit. That said, *The Gradual Disappearance of Jane Ashland* is a masterfully constructed book, one that will leave readers searching for what it means to disappear.



Bring in a copy of this review and receive 20 percent off any one title in our store or ordered online at www.HeadHouseBooks.com.

HEAD HOUSE BOOK UPCOMING EVENTS

November 6, 7:30 p.m.

Nitin Ahuja and Patrick Blanchfield, contributors to *What Future 2018*

These two local contributors to the collection will be in conversation about climate change, technology, the future of humanities and medicine, plus other topics explored in the anthology.

November 16, 7:30 p.m.

James Geary, author of *Wit's End: What Wit Is, How it Works, and Why We Need It*

We'll be celebrating the publication of *Wit's End* with word games, creativity tests and more fun activities led by author James Geary.

Old Pine Street Church
Established 1768



Where History, Faith,
Message, Music &
Fellowship intersect at

412 Pine Street
Sunday Worship
10:30am

215-925-8051
www.oldpine.org



Elfant & Wissahickon
— REALTORS —

Your Neighborhood Resource
For Everything Real Estate



Claudia McGill
215.893.9920 claudiamegill.realtor

Selling Society Hill Towers Condominiums for 38 Years

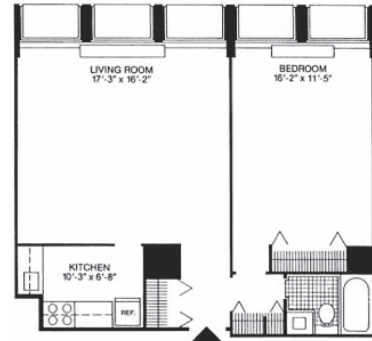
FOR SALE! Sunny One Bedroom



with modern finishes, floor-to-ceiling window walls, an updated kitchen and wood floors throughout.

683 sf

Offered for \$259,900



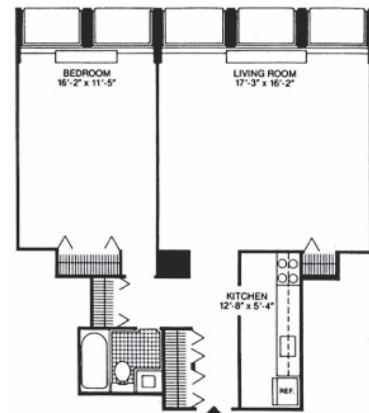
FOR SALE! Updated One Bedroom with Southern Views



Updated one bedroom with southern views towards the river and Society Hill with an open modern kitchen with high-end finishes and breakfast bar and a white tiled bathroom.

699 sf

Offered for \$264,900



Some of our recent sales at Society Hill Towers

Thinking of buying or selling a condo at Society Hill Towers?

Call us. We are happy to help you.

Allan Domb

- | | | |
|-----------|-----------|-----------|
| 3B North | South | 2B South |
| 11BCD | 8F South | 26C West |
| North | PH6 South | PH5 South |
| 24G North | 21G West | 12G South |
| 14C South | 27B West | 29E South |
| 28E North | 22AH West | 10AH |
| 23B South | 5B North | North |
| 26C West | 19A North | 4E South |
| 26B West | 4G North | 24G North |
| 10E West | 31C West | 2E West |
| 19BCD | 24B West | |



AD Allan Domb Real Estate

PHILADELPHIA'S LARGEST SELLING CONDOMINIUM REALTOR® WE COOPERATE WITH ALL REALTORS®
 1845 Walnut Street, Suite 2200, Philadelphia, PA 19103 Phone: 215.545.1500 allandomb.com domb@allandomb.com



ON OUR SHELF

BY RICHARD DE WYNGAERT

Richard's 2018 Holiday Picks

Nonfiction

Becoming by Michelle Obama. An intimate, powerful and inspiring memoir by the former First Lady of the United States. Michelle Obama invites readers into her world, chronicling the experiences that have shaped her.

21 Lessons for the 21st Century by Yuval Noah Harari. A probing and visionary investigation into today's most urgent issues as we move into the uncharted territory of the future.

1,000 Books to Read Before You Die by James Mustich. An insightfully curated personal compendium that will inspire hours of browsing and a lifetime of reading.

These Truths: A History of the United States by Jill Lepore. See America, beginning in 1492, through the lens of its ideals, its ideas and its contradictory understandings of historical truth.

Fiction

Killing Commendatore by Haruki Murakami. A tour de force of love and loneliness, war and art — as well as a loving homage to *The Great Gatsby*.

A Well-Behaved Woman: A Novel of the Vanderbilts by Therese Anne Fowler. The riveting novel of iron-willed Alva Vanderbilt and her illustrious family as they rule Gilded-Age New York.

Culinary

Israeli Soul by Michael Solomonov. Michael Solomonov, Israeli chef and Philadelphia restaurateur known for his landmark restaurant, Zahav, and Steven Cook go straight to the food of the people — the great dishes that are the soul of Israeli cuisine.

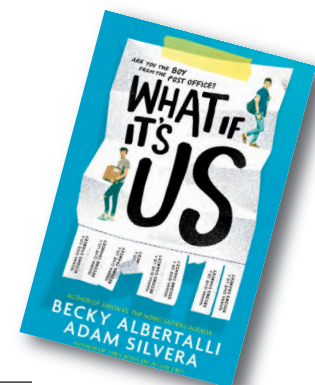
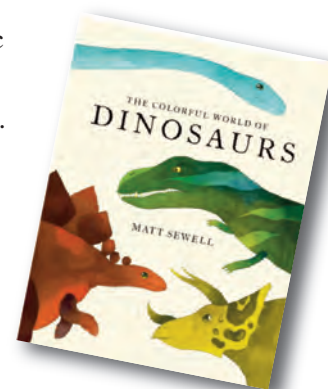
For Younger Readers (and others)

Anne Frank's Diary: The Graphic Adaptation by Ari Folman and David Polonsky. Authorized by the Anne Frank Foundation in Basel, this first graphic edition includes extensive quotation directly from the definitive edition, while the stunning illustrations interpret and add layers of visual meaning and immediacy to this classic work of Holocaust literature.

The Colorful World of Dinosaurs by Matt Sewall. This magnificent book imagines dinosaurs as they might well have been, based on recent findings — feathered, finned and full of color. Gorgeous watercolors accompany surprising, and fun-to-tell facts about dinosaur behavior, habits and appearance, bringing these prehistoric creatures to life in a new way.

A History of Pictures for Children by David Hockney. *A History of Pictures* takes young readers on an adventure through art history. From cave paintings to video games, this book shows how and why pictures have been made, linking art to the human experience.

What If It's Us by Becky Albertalli and Adam Silvera (14 and up). These critically acclaimed authors combine their talents in this smart, funny and heartfelt collaboration about two very different boys who can't decide if the universe is pushing them together — or pulling them apart.



Richard De Wyngaert is the proprietor of Society Hill's only local, independently owned bookstore, Head House Books, located at 619 S. 2nd Street. Events Coordinator **Vivienne Woodward** wrote the review.

R. CHOBERT PAINTING

Residential | Commercial | Interior | Exterior

www.rchobertpainting.com

Michael Chobert 215-389-7788
 Fax 215-755-6655
 rchobertpainting@aol.com
 641 Reed Street, Phila. PA 19147



Creating
Beauty
Since 1967

Intelligent Exercise with Profound Results!

Private or duet sessions available at our fully equipped studio at 9th and Spruce Streets

Inquire about our new client special.

PilatesByPamela

Stott Pilates Certified Instructor
 914-552-0288
 pilatesbypamela@gmail.com



www.pilatesbypamela.com

INDEPENDENCE PLACE

233 - 241 S. 6th Street



Three bedroom, two bathroom featuring a sun-soaked open floor plan with a luxurious master suite, beautifully appointed bathrooms, balcony and see-forever views from the river to the skyline.
1,734 sf | \$1,095,000



South-facing two bedroom, two bathroom with a balcony and high-end finishes throughout including a chef's kitchen and marble appointed master bath.
1,387 sf | \$779,900



Updated one bedroom with sunset city views, a modern kitchen and bath, large open great room, great closet space and a washer/dryer.
850 sf | \$325,000



Completely renovated, south-facing two bedroom, two bathroom with a chef's kitchen, balcony, wood floors and beautifully appointed bathrooms.
1,387 sf | \$899,900

Recently Sold by Allan Domb Real Estate at Independence Place

1605-1606-I	1509D-I	1410E-I	706F-II	1412B-II	301K-I	1206-II
1502L-I	1802L-II	1907H-I	608C-II	1906-7-I	706F-II	1706-I
2408-I	2407-II	1906C-I	612G-I	1906-II	2106-II	2102-II
502-II	1505-II	1102-I	1901K-I	1511-I	1102-I	812-II

AD Allan Domb Real Estate
 PHILADELPHIA'S LARGEST SELLING CONDOMINIUM REALTOR® WE COOPERATE WITH ALL REALTORS®
 1845 Walnut Street, Suite 2200, Philadelphia, PA 19103 Phone: 215.545.1500 allandomb.com domb@allandomb.com



HEADHOUSE FARMERS' MARKET

BY LISA KELLY

Ashbell's Brings the South to Headhouse Market

The Food Trust continues to achieve its ongoing mission to provide our neighborhood with a winning variety of fresh, local, high-quality foods each and every Sunday. With that in mind, the merchants would like to remind everyone that the Headhouse Farmers' Market will continue to operate year-round. Because we are in our second year of this format, we look forward to more options for hardy, late-season produce, since farmers have had the opportunity to plan and plant with a year-round market in mind.

Therefore, we have invited Ashbell's to join the Market. The ready-to-serve, sustainably raised smoked and cured product is now a Sunday fixture. An added plus is that this chef-created fish and meat is heart-healthy!

Chef and founder Ashbell McElveen was born and raised in South Carolina and learned traditional Southern recipes from his grandfather. He studied cooking in Paris, traveled the world exploring different flavors and techniques, and then established his namesake company. Ashbell's describes its product as "meat and fish with a 'foodie' makeover; the recipes marry global flavors and spices with Southern-style cures and the slow burn of genuine applewood." Their Sunday market offers tuna and salmon in jerk seasoning, inspired by Chef Ashbell's travels to Jamaica, and a rendition of pastrami that uses 10 global spices. They offer trio sample packs for parties, are planning an online shopping site and will host culinary salons in the near future. Chef Ashbell is scheduled to appear on the new season of Beat Bobby Flay on The Food Network.

Farmers' Market Holiday Hours

Shoppers should place special orders for turkeys, pies and other holiday items ahead of time.

Sunday November 18, 10 a.m. to 2 p.m.

Wednesday November 22, 10 a.m. to 4 p.m.
(Special extended hours for pre-Thanksgiving market — not all merchants will be present.)

Sunday November 25, MARKET CLOSED

December markets will operate each Sunday from 10 a.m. to 2 p.m. with no alteration for holidays.

Starting in January, hours will be 10 a.m. to 1 p.m.

When asked about the Headhouse Market, Chef Ashbell is enthusiastic; "It is going very well. The Food Trust offered us a wonderful opportunity, and the Society Hill community has definitely embraced us. Within the first few weeks, we saw a tremendous response from customers. We are really looking forward to the holiday season — there will be lots of new products for our customers' entertaining!"

Katy Wich, Senior Associate of The Food Trust Farmers' Market Program, who is a fan of Ashbell's, says "I regularly get the duck breast pastrami and I love it. I usually make it into some sort of fried rice dish... and I've had colleagues stop me in the hallway to rave about the salmon!"

The folks at Ashbell's provided this recipe developed by Chef Malik Ali of South Restaurant, using Ashbell's turkey pastrami and autumn vegetables from the market:

Ashbell's Smoked Turkey Sweet Potato Hash

Makes 3 cups

- 4 oz Ashbell's Turkey Thigh Pastrami, cubed
- 1 stalk celery, chopped
- 1 bunch celery leaves, chopped
- 5 cloves garlic, chopped
- 2 sweet potatoes, boiled and cubed
- 4 large kale leaves, chopped OR
- 1 cup chopped spinach
- ½ stick butter OR ¼ cup Extra Virgin Olive Oil
- salt and pepper to taste
- pinch of chili pepper
- 2 tablespoons Balsamic Glaze (recipe follows)

Heat butter or oil in pan; add garlic and sauté until fragrant.

Add celery stalk, kale/spinach, and stir a few minutes until celery begins to soften and greens are wilted.

Add turkey and heat through (it is already fully cooked). Sprinkle celery leaves on top. Add salt, pepper and chili pepper.

Serve as is, or drizzle with glaze shown below.

Balsamic Glaze

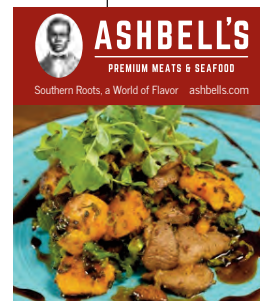
Makes 1 cup

- 1 cup balsamic vinegar
- 1 cup brown sugar

In a small saucepan over medium heat, simmer vinegar and sugar until bubbling.

Cook until liquid reduces and thickens enough to coat the back of a spoon.

Cool at room temperature and use as desired.



The Food Trust, in partnership with Get Healthy Philly, operates more than 25 farmers' markets in Philadelphia, including the Headhouse Farmers' Market, Philadelphia's largest outdoor market. The Food Trust has been working to ensure that everyone has access to affordable, nutritious food and information to make healthy decisions. To get involved with The Food Trust, see our website www.thefoodtrust.org.

THE CADWALADER HOUSE

240 S. 4th Street

A chance to live in history!



Walk the same halls as:

- George Washington
- John Adams
- Meriwether Lewis
- Richard Henry Lee
- Francis Lightfoot Lee

The historic Cadwalader House offers the opportunity to create a custom mansion in the heart of Society Hill by restoring this historic property to its original splendor. The home spans five stories and will offer grand entertaining space and large bedroom suites. There is a private garden and space for two parking spots.

Built in 1829 by Joseph Norris, this historic home became known as The Cadwalader house thanks to Judge John Cadwalader who both resided in and had his legal office there. Cadwalader was best known for serving one term in the US House of Representatives and then later becoming a United States District court judge, an appointment made by his good friend President James Buchanan. Over the years the residence has served as the home of the Mutual Assurance Company and offices for the Archdiocese of Philadelphia. 9,003 sf | **\$2,350,000**

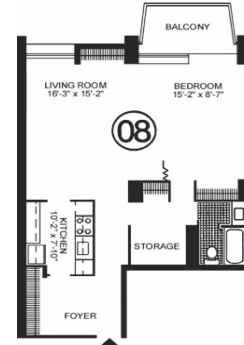
AD Allan Domb Real Estate

PHILADELPHIA'S LARGEST SELLING CONDOMINIUM REALTOR® WE COOPERATE WITH ALL REALTORS®
 1845 Walnut Street, Suite 2200, Philadelphia, PA 19103 Phone: 215.545.1500 allandomb.com domb@allandomb.com



Hopkinson House

604 S. Washington Square



Washington Square facing 1 bedroom on a high floor featuring a private balcony, large kitchen with great cabinet and counter space, wood floors, and excellent closet space. **843 sf | \$335,000**



South-facing deluxe 1 bedroom on a high floor with magnificent river and city views from the home's private balcony. The residence has great natural light, excellent closet space and generously sized rooms. **1,003 sf | \$344,900**



Bright and sunny corner 2 bedroom, 1.5 bathroom with townhouse views to the south and east. The home features an open floor plan with large living and dining rooms. Both bedrooms are generously sized and there is a private balcony. **1,200 sf | \$459,900**



CHERRY STREET PIER

Bringing the Arts to the River

The Delaware Riverfront continues to evolve, with the recent opening of the Cherry Street Pier, a mixed-use public space created by and for the community. Built into the shell of a century-old municipal pier, Cherry Street Pier is a market, workspace, venue and park, equitably shared and enriched by resident artists, the community and visitors.

The first group of artists have been chosen and will use the spaces full-time to create, educate, host and show visitors how the creative process works. They will also be exhibiting and selling their work in the studio spaces or in one of the many exhibition and market areas around the pier. For more info, visit www.delawareriverwaterfront.com/places/cherry-street-pier.



Rendering of the Cherry Street Pier

ODDS AND ENDS

Save the Date: December 16

Lessons and Carols, Old St. Joseph's Church

Old St. Joseph's Church, 321 Willings Alley, will present an Advent-Christmas Service of Lessons and Carols on Sunday, December 16 at 3 p.m. In addition to festive Advent and Christmas carols or congregational singing, choral music will include works by Praetorius, Willcocks and Rutter, and organ music by Bach and Brahms. A free will offering will be gratefully accepted. A reception will follow. All are cordially invited!

Parking

A limited number of monthly parking spaces are still available at the renovated lot at 511 S. Front Street (between South and Lombard Streets.) If interested, contact Ed Sullivan with Park America at: 610-637-6832.

Exercise and Socialize

The **Walkie/Talkies** meet at Three Bears Park, Delancey Street between 3rd and 4th Streets, on Tuesday and Thursday mornings at 8:15 a.m. for a one-hour stroll through

our historic community. Anyone is welcome to join in this non-stressful, one-hour exercise and socialize program.

"Philly Is Walking In The Park!"

meets at the fountain in the center of Washington Square, 6th and Locust Streets, at 8 a.m. on Mondays, Wednesdays and Fridays for a half-hour, self-paced walk through our historic, beautiful park led by neighbor Dr. Lisa Unger. All are invited to join us.



cherry
BLOW DRY BAR



Become a Member Today!

Ladies of Society Hill



FIND OUT WHAT YOUR NEIGHBORS ARE RAVING ABOUT!

EXCLUSIVE OFFER!

\$5 OFF*

INTRODUCTORY BLOWOUT

*Offer available to residents of Society Hill. First time clients only. Wash & Style included. Offer expires 12/31/18

  Follow us on Facebook and Instagram to cash in on spectacular holiday savings!

BLOWOUTS • MAKEUP • TREATMENTS • EXTENSIONS • UPDOS

Cherry Blow Dry Bar • Society Hill, Philly

713 Walnut Street, 1st Floor, Philadelphia, PA 19106 | 215-372-7026 | cherryblowdrybar.com



**SMART
RESPONSIVE
EXPERIENCED**
BARI SHOR
Real Estate
MatchMaker

Whether you're selling or buying
a home in amazing Center City,
Bari Shor cares and *delivers* for you.

I am your neighbor,
let me be your Realtor,[®] too!



**BERKSHIRE
HATHAWAY**
HomeServices

Fox & Roach, REALTORS[®]

215-790-5678
baribshor@gmail.com
215-546-0550 x 5678

**Plumer &
Associates, Inc.**
Realtors

Plumer

Center City's largest
independent Realtor.
Serving Philadelphia since 1923.

**Residential,
Commercial,
and Investment
Real Estate**

For a complete listing of Center City
properties visit our website:
www.plumerre.com



226 South Street, Philadelphia
info@plumerre.com
215 922 4200

Top 6% of all Realtors in Prudential Network Nationwide
Accredited Luxury Home Specialist
Diamond Award

I am a professional,
full-time real estate agent
as well as your neighbor.

■ **PAMELA D. LAWS**

ABR, ALHS, SRES, ASP

Like many of my clients,
Society Hill is my home.
I specialize in Center City
because I love Philadelphia.
Let me find the perfect
townhome or condo for you!



**BERKSHIRE
HATHAWAY** | Fox & Roach,
HomeServices | REALTORS[®]

215.790.5688 pam.laws@prufoxroach.com
WWW.PHILADELPHIAPROPERTIES.NET

An independently owned and operated member of the Prudential Real Estate Affiliates, Inc.



**Our
record
speaks
for
itself.**

Kathy, Patrick and the
Conway Team



**BERKSHIRE
HATHAWAY**
HomeServices
Fox & Roach, REALTORS[®]

conwayteam.com • kathy@conwayteam.com
215-266-1537 • 215-627-6005

MEMBERSHIP REPORT

BY MATT DEJULIO

SHCA Membership Reaches Another All Time High

SHCA membership totaled 1,206 by early October — an all-time high surpassing the previous high of 1,141 in 2017 — following the record set over 2016. This year, 160 new members gave our membership rolls a big boost, up from 132 last year. There were only 80 non-renewals, versus 105 last year.

In each weekly email, we have been reminding residents of the online renewal option, saving us considerable dollars that can be re-directed to community improvement projects. If you have not already renewed online via our website www.societyhillcivic.org, you should have received by now a reminder in the mail. Please act today so no further snail mail is required.

Whether you renew online or by mail, try to do so before December 31 if you wish to be placed in a drawing for a gift certificate to a local restaurant. New members this year who joined after June 1 will be grandfathered through 2019.


If you are a member and have not already requested your free copy of our *Guide to Historic Society Hill*, now is the time to do so before supplies are exhausted. It makes a perfect holiday gift for your friends and relatives who do not live in Philadelphia. One copy per member; additional copies may be purchased at \$10 plus shipping.

Why is your membership so important? Besides providing funding for our many neighborhood improvement projects, such as graffiti control, weekly sidewalk cleaning and plantings in Washington Square, numbers speak volumes. When our board advocates on your behalf regarding zoning changes, real estate taxes, crime problems, ramp issues, trash receptacles, street lighting, bus re-routing, etc., it makes a greater impact if they can say they speak on behalf of the majority of residents. You are also guaranteed a personal invitation to each of our social events.

Without member dues, SHCA would cease to function. Protect your neighborhood and your real estate investment. Sign up today!

Email Mattdejulio@aol.com if you have any questions or wish to comment on why you are not a member. All comments will be shared with the board, which is representative of every quadrant in our most unique historic neighborhood.

Matt DeJulio is a retired publishing executive. He has served SHCA as its administrator since 2001.



Membership Application

Name _____

Address _____ Apt. # _____

City, State, Zip _____

Home Phone _____

Work Phone _____

Email (print clearly) _____

IMPORTANT: Today, most everyone communicates via email. Please be sure that we have your current email address — so that you can receive important updates between publication of our community newsletter. All SHCA emails will be judiciously screened, and rarely will we send emails more than once a week. Nor will we share your email address with anyone else. This convenient, 21st-century system helps save our civic association postage costs, while keeping you regularly informed.

<p>Residential Memberships</p> <p><input type="radio"/> \$ 50 Basic Household Membership</p> <p><input type="radio"/> \$ 40 Senior/Student/Single</p> <p><input type="radio"/> \$ 100 Federal Friend</p> <p><input type="radio"/> \$ 150 Georgian Grantor</p> <p><input type="radio"/> \$ 300 Jefferson Benefactor</p> <p><input type="radio"/> \$ 500 Washington Benefactor</p> <p><input type="radio"/> \$ 1,000 Benjamin Franklin Benefactor</p>	<p>Business Memberships</p> <p><input type="radio"/> \$ 100 Institutions — 5+ employees</p> <p><input type="radio"/> \$ 60 Institutions — fewer than 5 employees</p>
--	---

Additional Contributions

\$ _____ Washington Square Beautification	\$ _____ Franklin Lights
\$ _____ Sidewalk Cleaning/Graffiti Removal	\$ _____ Tree Tenders
\$ _____ 5th Street Legal Fund	\$ _____ McCall School

Total Enclosed \$ _____

Charge VISA/MasterCard:

Number _____ Exp Date _____

Signature _____

The following topics are of special interest to me. I welcome receipt of email updates on these topics.

<input type="checkbox"/> Clean-Up Day	<input type="checkbox"/> Washington Square	<input type="checkbox"/> Zoning & Historic Preservation
<input type="checkbox"/> Franklin Lights	<input type="checkbox"/> Social Events	<input type="checkbox"/> 5th Street Development
<input type="checkbox"/> Dilworth House	<input type="checkbox"/> Property Taxes	<input type="checkbox"/> Local Crime Incidents
<input type="checkbox"/> Reporter	<input type="checkbox"/> Fundraising	<input type="checkbox"/> and Alerts

Please return completed application to:
Society Hill Civic Association, P.O. Box 63503, Philadelphia, PA 19147

OUR CREATURES GREAT AND SMALL

BY CLAUDIA CARABELLI

The “Wolf” of Gaskill Street

In fairness to our readers, I offer two disclaimers. Gaskill Street is one-half block outside of Society Hill, so I did take some literary license. And to avoid any charges of nepotism, this beast, owned by Evan Carabelli and Beth Zhou, is my “grand dog.”

Let’s start by selecting the correct answer.

The least opportune time to get a new puppy is:

- A** Once you’ve purchased a house with fenced outdoor space.
- B** When you’re working from home with time to dedicate to training.
- C** While you’re a senior in college, living off-campus with four guys in a rental property that forbids pets, with no idea where you’ll be after graduation.

If you picked C, not only are you right, but you can appreciate where this story starts.

Evan always loved dogs, grew up with dogs and naturally wanted a dog of his own. Despite his parents’ pleas to wait until he finished school, Evan was determined to take on a pet while a senior at Penn. After many shelter visits looking for just the right one, he found an adorable pup at PAWS (Philadelphia Animal Welfare Society), which was on his way back after filming a TV segment for Adopt-a-Pet of the week. Found on the street, he was about five months old, malnourished, with matted fur and kennel cough. No one knows where he came from, so his background remains a mystery. Photo ID and \$40 got our son a medicated, immunized, micro-chipped and neutered little guy ready to go to his “forever home.” A die-hard Philly sports fan, Evan named the pup Julius Erving.

Now 10 years old, Julius, aka “J,” can best be described as a “wolfish” looking shepherd-lab mix. Interestingly enough, his doggie DNA testing also included Pug, Dachshund and Shar-Pei. Go figure. He has long black fur, one ear that flops down endearingly and legs as long as his namesake. At 90 plus pounds, he



“He loved to jump on things like dining room tables and then was afraid to get down on his own.”



Beth Zhou, Evan Carabelli and Julius Erving

looks intimidating enough that Beth could probably walk him down back alleys at 2 a.m. In reality, he’s a docile, friendly giant whose chief prey is peanut butter.

His time from adoption to current day, however, was not without incident. Being abandoned, the lack of early socialization from his mother left him with some behavioral challenges. He ate anything! The veterinary term “indiscriminate eater” is often seen with stray dogs that scavenge on the streets to survive. Everything is food until proven otherwise. This may not seem like much of a problem until your 10-month-old puppy is deathly ill and ends up at Penn Vet Hospital with an abdominal obstruction. If you’ve ever seen the movie *Jaws*, you may remember the scene where they catch a large shark, string him up, slice open his belly and all sorts of debris spills out. It was something like that. After surgery to remove 40 percent of his small intestine and a vet bill that far exceeded the \$40 adoption fee (thank you, mom and dad), J was headed back home to recuperate.

Mr. Erving made a nice recovery and went on to work out his “issues.” Although he was great with house training and had zero food aggression, there were still things that triggered him. Passing skateboards made him go berserk. He would bite at his leash and chewed through more than a few. He loved to jump on things like dining room tables and then was afraid to get down on his own. He could shred dog beds in record time and liked nothing more than foraging through household trash. Once, when being walked by a friend, his chomped all the flowers off a passerby’s bouquet. Since other big dogs sometimes got him too hyped up, dog parks were a no-no. To say he was a handful would be the understatement of the year.

Through moves from University City to Roxborough to Manayunk to Grad Hospital and now Queen Village, Julius eventually matured and settled down. Evan loved him through his problem years and married a terrific woman who accepted J as her own. All three now live happily in our wonderful neighborhood.

Claudia Carabelli serves SHCA as a director at large.



Discover my Italy

Out-Of-The-Ordinary Travel Experience

OUR TOURS REVEAL A VERY SPECIAL, INTIMATE ITALY...MY ITALY...
SOPHISTICATED, SURPRISING & ABSOLUTELY AUTHENTIC!

- Specializing in Exclusive Small Group Tours and Custom Travel
- Unique Itineraries & Exclusive Access
- Extraordinary Trips for Couples, Families, Individuals and Honeymooners

Giovanna Chiti
Owner & Tour Specialist
Philadelphia and Milan Resident



Italy Planned with a **Native's Insights** and **Insider's Connections.**



+1.215.586.3476

www.DiscovermyItaly.com

What's driving Compass?

Technology driven marketing that will sell your house faster and for more money than traditional real estate brokerages. Call Fred Manfred to learn more about how Compass will serve you.

"Fred sold our home exceedingly quickly and for a price we never expected."

- Brian & Brittany Coleman



Fred Manfred

215.687.8687

fred.manfred@compass.com

Five Star Real Estate Agent — Philadelphia Magazine

COMPASS

ON THE
SQUARE
REAL ESTATE



I don't mean to make you sick!

MAIN LINE TODAY
TOP DOCTOR
2015

Spending more time indoors exposes you to dust mites, pet dander, mold, smoke and heating system emissions. Cold symptoms that last longer than two weeks are most likely not a cold but winter allergies.

Get treatment at



1-800-86COUGH

AllergyAndAsthmaWellness.com



Dr. Mark Posner (2018-2013), Dr. Eva Jakobovics (2018-2014)
Dr. Robert Anolik (2018), Dr. Nora Lin (2018-2017),
Christine Malloy, MD (2018), Shashank Sheth, MD (2018),
Annie Khuntia, MD (2018), Matthew Fogg, MD (2018),
Patrick Vannelli, MD (2018), Sandhya Desai, MD (2018)

THE LIPPINCOTT

227 S. 6th Street



One of a kind home with 3 bedrooms plus a den and 3 bathrooms boasting exposed brick walls, an open floor plan, designer-appointed kitchen and baths, lavish master suite, private roof deck, fireplace and balcony. 2,306 square feet | \$1,695,000

We are pleased to announce that over the past two years, we have been responsible for selling more condominiums at The Lippincott than any other REALTOR.®

1SW 2NE 5NW

AD Allan Domb Real Estate

AllanDombRealEstate

PHILADELPHIA'S LARGEST SELLING CONDOMINIUM REALTOR® WE COOPERATE WITH ALL REALTORS®

1845 Walnut Street, Suite 2200, Philadelphia, PA 19103 Phone: 215.545.1500 allandomb.com domb@allandomb.com

